

New Shopping Center For Lease



6201 Whittier Blvd. Los Angeles Ca 90022

COMING SOON—Completion date approx. July 2010

For further information,
contact:

Leila Raen

License # 01870066

424. 653. 1112

LRaen@crarealty.com

Gary Goodgame

License # 01217839

424. 653. 1106

GGoodgame@crarealty.com

Premises: 14,781 RSF/Divisible by 800 sq ft

Lease Rate: \$2.75 per square foot, per month, NNN.

Possession: Negotiable

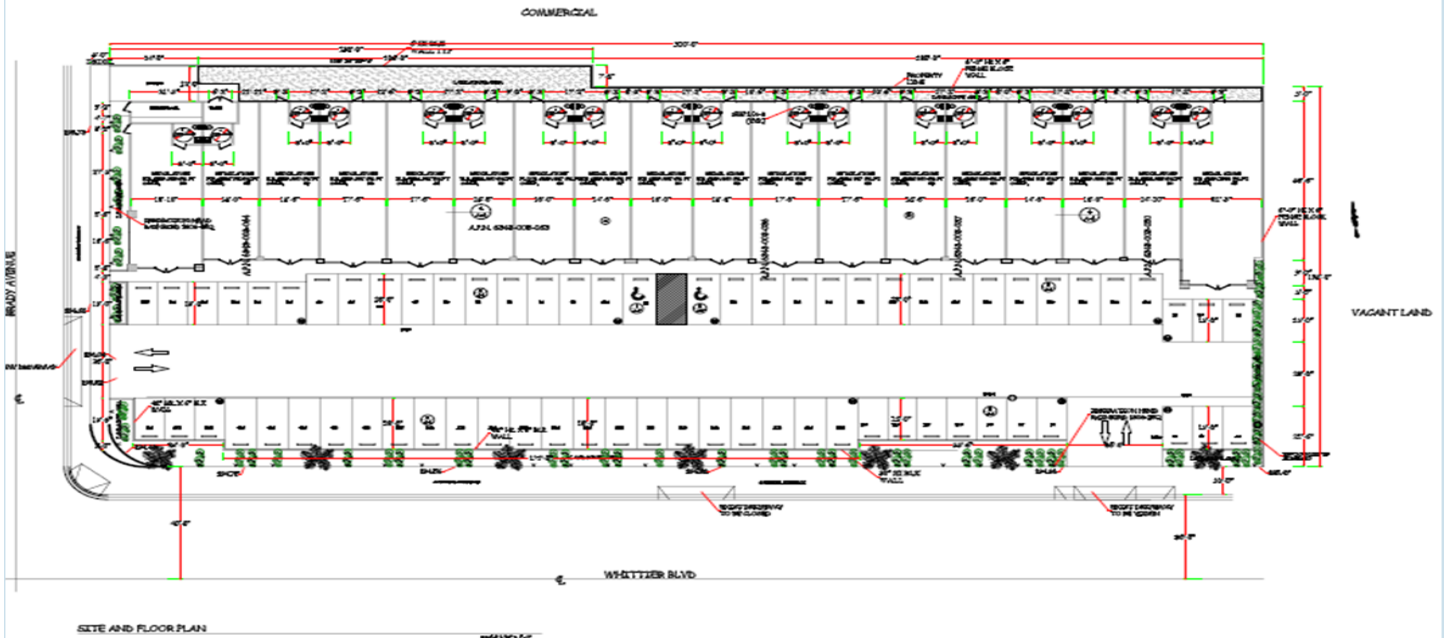
Features:

- Brand new Shopping center with beautiful curb appeal
- Retail area: 14,781 sq ft/ Land Area: 40,479 SqFt
- end cap + in-line spaces.
- Located at major Intersection with excellent visibility
- Highly populated area, with strong vehicular traffic counts, exceeding 60,000 cars per day
- 6 Miles East of Downtown Los Angeles
- Located in the midst of Shopping district
- The property enjoys excellent urban in-fill demographics: Over 40,000 people within a 1 mile radius & over 225,030 people within a 3 mile radius

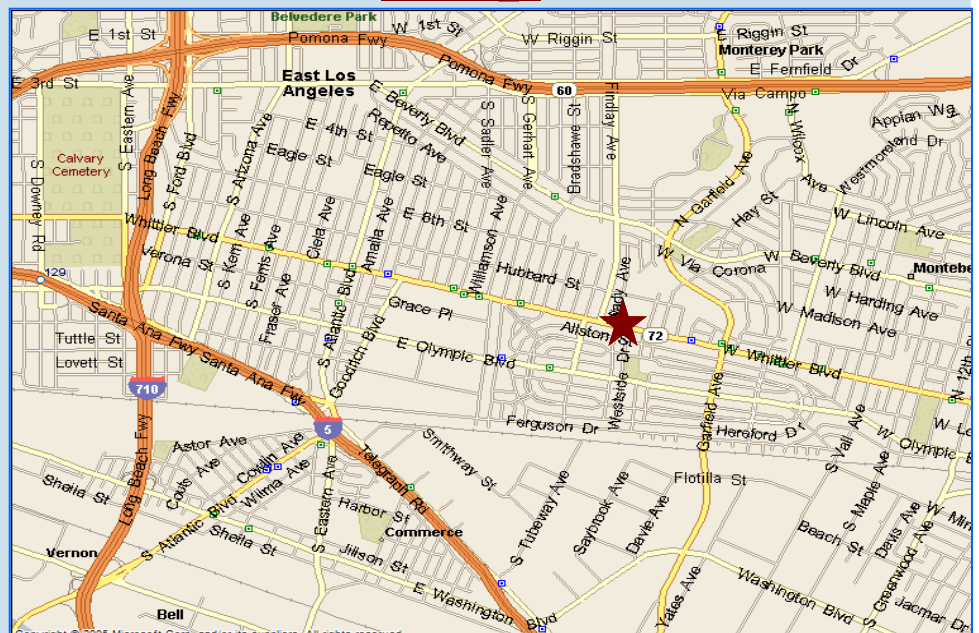
Corporate Realty 
Associates

6201 Whittier Blvd Los Angeles Ca 90022

Site Plan



Map



For further information,
contact:

Leila Raen

License # 01870066

424. 653. 1112

LRaen@crealty.com

Gary Goodgame

License # 01217839

424. 653. 1106

GGoodgame@crealty.com

Corporate Realty
Associates