

PRIME SUBLEASE 5,663 RSF 3500 WEST OLIVE AVENUE | BURBANK, CA 91505

For More Information Contact:

Peter Carr
Vice President
Office—323.653.0500 x 108
Fax—323.653.0520
pcarr@crealty.com

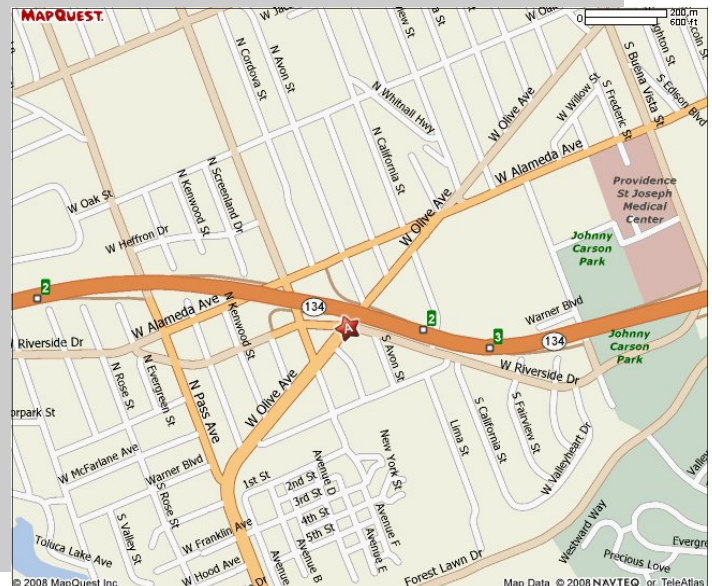
Or

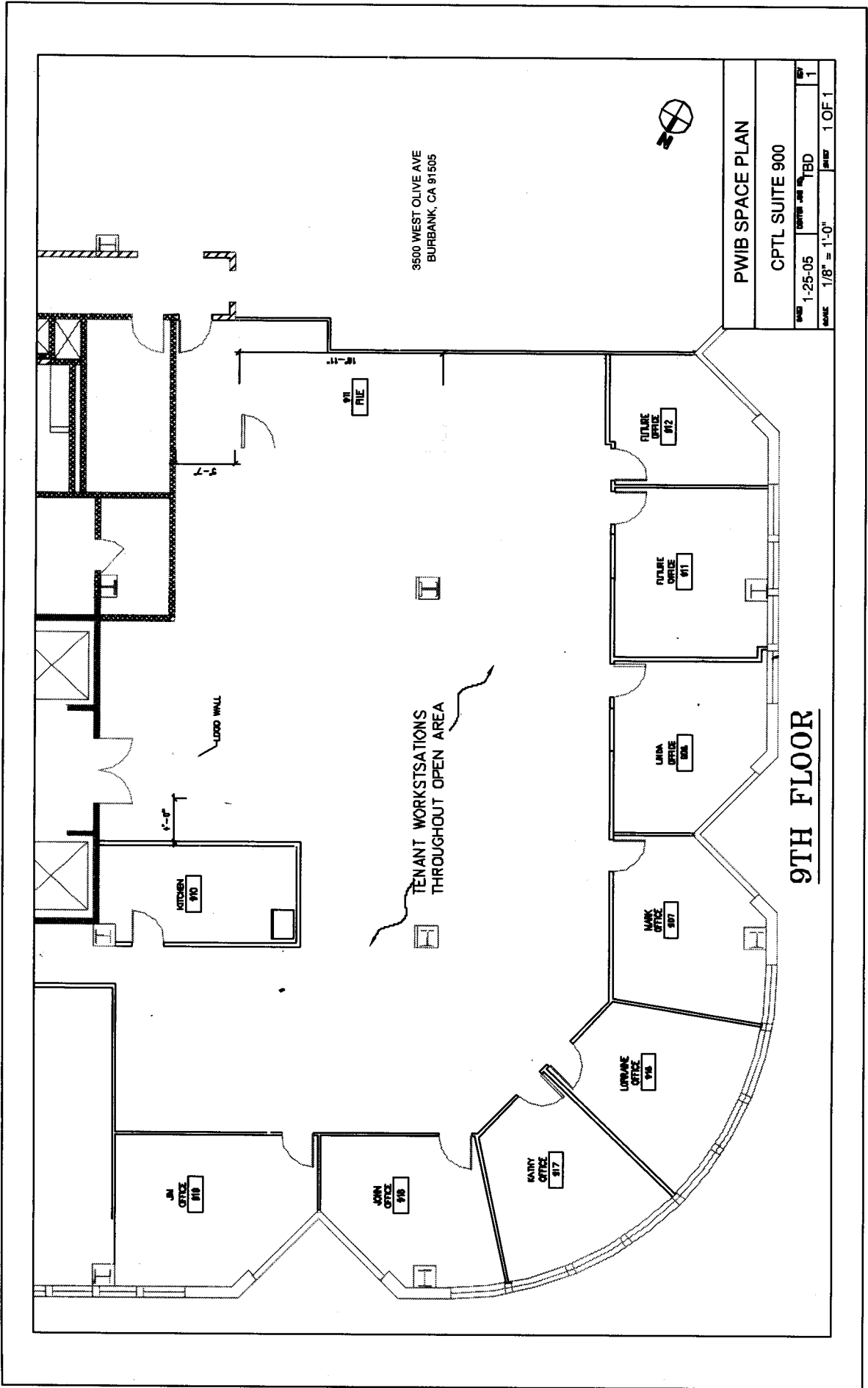
Steve Sapunor
Senior Vice President
Office—323.653.0500 x 101
Alt Office— 949.639.2468
Fax—323.653.0520
sapunor@crealty.com

Corporate Realty Associates
8383 Wilshire Blvd. Suite 210
Beverly Hills, CA 90211
Main Office—323.653.0500
Fax—323.653.0520
<http://www.crealty.com>



- High Visibility Class "A" Building
- North Facing 9th Floor Space with Spectacular Views
- Strong Ownership and Management
- Motivated Sublessor
- Negotiable Below Market Sublease
- Lease Expires February 2010





3500 WEST OLIVE AVE
BURBANK, CA 91505



PWIB SPACE PLAN

CPTL SUITE 900

DATE	1-25-05	DESIGNED BY	TBD	SCALE	1/8" = 1'-0"	SHEET	1 OF 1
------	---------	-------------	-----	-------	--------------	-------	--------

TENANT WORKSTATIONS
THROUGHOUT OPEN AREA

9TH FLOOR

JOHN
OFFICE
916

JOHN
OFFICE
918

KAREN
OFFICE
917

LAURIE
OFFICE
915

MARK
OFFICE
907

LINDA
OFFICE
908

FUTURE
OFFICE
911

FUTURE
OFFICE
912

FILE
911

KITCHEN
910

LIQUID WALL

6'-0"

5'-7"